

# SOLUTIONS FOR AUTOMATION OUT OF THE BOX

”

FOR US, IT'S  
NOT JUST ABOUT  
HAVING SOLUTIONS,  
BUT FINDING ONES  
THAT WORK FOR  
OUR CUSTOMERS.



Dr Georg Baumann  
Founder of Baumann GmbH

**1984**  
Foundation



Manufacturing  
Construction  
Assembly  
Programming  
Service  
**baumann**

**10000**  
staff across the world  
who love technology

**Family company**  
with over 40 years  
of experience in  
automation

**30.000 m<sup>2</sup>**  
of production space

**7.300**  
robot cells  
in 22 countries

## KEY FACTS

**36**  
charging points  
for electric cars



**> 500.000 kWh**  
of self-generated electricity

**> 80**  
Apprentices  
in 11 professions

# WE ARE BAUMANN

With our deeply ingrained spirit of discovery and love of innovation, we develop special machines for the automotive and electrical industries. In close cooperation with our customers, who we regard as our equals. We love forging new paths and always have a clear goal in mind: to find nothing less than the perfect solution. From the design and assembly to handling, testing and system integration of external processes, we offer complete innovations from a single source – from the individual robot cell to the completely automated production line.

With over 35 years of experience, we are able to specifically hone in on new trends and therefore focus primarily on future-oriented developments such as autonomous driving, e-mobility, digitalisation and artificial intelligence.

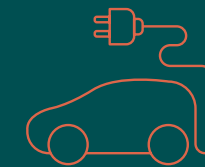
Thanks to many years of collaboration with a wide range of customers in various industries, we now offer flexible, scalable and versatile automation platforms – combined with comprehensive service. So that every project runs just like our machines do: to everyone's complete satisfaction. And preferably far beyond.



## AUTOMATION PERFECTED

The high number of turnkey solution systems speaks for itself. Baumann develops flexible automation solutions based on the key criteria of rationalisation, improved quality and traceability. Providing forward-looking solutions for our customers' tasks is our top priority.

An increasing number of industrial sectors are setting their sights on process rationalisation, aiming to produce better, quicker and cheaper: something that you can also benefit from thanks to Baumann's everything from a single source' concept.



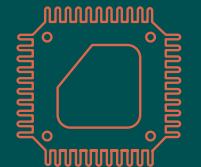
### E-MOBILITY/BATTERY

Two of our core focal points in the automation of manufacturing processes are e-mobility and battery assembly systems.



### AUTONOMOUS DRIVING

In order to be able to drive autonomously, a combination of various driver assistance systems must be installed. We offer our customers optimal solutions for this.



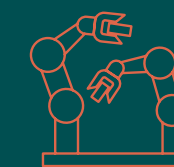
### POWER ELECTRONICS

We are specialists in the field of separating ceramic printed circuit boards and offer innovative technical solutions in this regard.



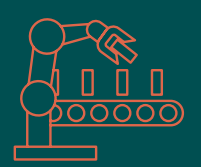
### TESTING

With testing solutions we enable our customers to maintain product quality over the long term – from production to final testing.



### ASSEMBLY

Our customers benefit from our extensive expertise in automation – particularly in the assembly and handling of complex components made from challenging materials.



### LOADING SYSTEMS

We offer customised and standardised solutions for the efficient and safe loading and unloading of processing machines, injection moulding machines and machining centres.



### INDUSTRY 4.0

The use of robot technology for automation and digitalisation in industrial production is one of our core areas of expertise.



### SYSTEM INTEGRATION

Thanks to our long-standing experience in the field of programmable logic controllers (PLC), we can supply machine control software whose distinguishing feature is user-friendly interfaces



## INDUSTRIES

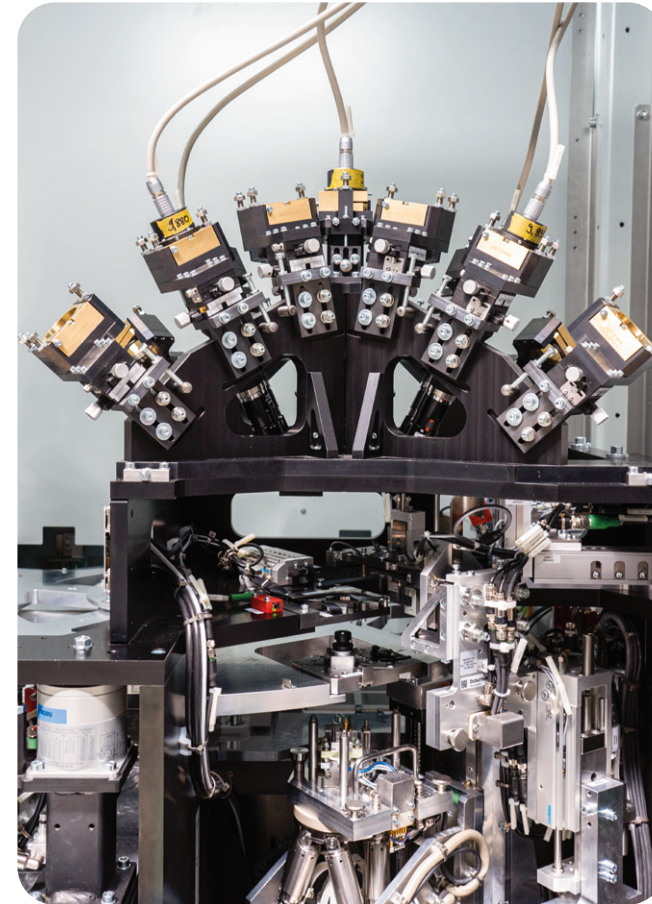
Our many years of industry expertise mean that our customers and partners benefit from consistent expert advice that goes far beyond the standard – from assembly to testing. Whether the automotive industry, electrical industry or aviation: we speak the language of the respective target group and are a reliable partner, advisor and producer for individual automation solutions – all from a single provider.



### AUTOMOTIVE INDUSTRY



- Control units and on-board electronics
- Advanced driver assistance systems
- Electric actuators
- E-drive components
- Battery and fuel cells



### ELECTRICAL INDUSTRY



- Electronic devices and assemblies
- Printed circuit boards and power electronics
- Depanelisers for printed circuits boards and ceramic components



### OTHER INDUSTRIES



- Home and building technology: Energy-saving pumps\*
- Medical technology: pacemakers\*
- Machine tool construction
- Energy: Hydrogen production\*
- Alternative mobility: Aviation\*

\* example

# THE PERFECT MATCH FOR EVERY APPLICATION

Our standardised automation platforms enable you to react to any changes in the customer's products at any time without exceeding the often tight deadlines to the SOP. Baumann offers everything from a single source:

- Final assembly systems from the individual cell to the complete line
- From LCIA (Low Cost Intelligent Automation) to production volume dependent partial automation and robot-supported full automation.
- Advanced test procedures can be flexibly integrated as modular units

Some of the major benefits include flexibility, the option to extend to complex production lines, scalability and short delivery times. Our compact robot cells are easily accessible, almost always available and quick to convert.





# BASIC MODULE FOR ROBOT APPLICATIONS

With its overhauled design, the latest version of the ro|box V10.1 is a robust basic manufacturing module for robot applications, which is based on the latest machine guidelines and equipped with proven safety technology. It is ESD-capable with extremely low vibration. Just one controller is needed to operate several cells simultaneously.



baumann  
**ro|box**

# SERIES PLATFORM FOR HANDLING

The feed|box is a universal loading cell for machine tools and process stations and available in a range of sizes. In the expansion stages 'lean', 'basic' and 'extended', it is ideal for simple parts handling when loading and unloading machining centres as well as for the integration of complex technical processes or the testing of components as part of the quality assurance process.



baumann  
**feed|box**

## THE FLEXIBLE WAY TO TEST

The te|box is the standardized, flexible platform for test engineering applications. Thanks to the scalable modular system and the various loading options, the te|box offers maximum adaptability in production. The convertibility from a stand-alone system to a fully automated test line additionally reduces investment costs.



baumann  
**te|box**

## PLATFORM FOR SEMI-AUTOMATED TASKS

The lean|box is an entry-level product for your automation. This automation platform offers simple, cost-optimised installation. The two versions 'entry' and 'premium' are designed for manual or semi-automated assembly and testing tasks. The separate upper and lower structure enables a wide range of combinations and design options.



baumann  
**lean|box**

# MODULAR TEST SYSTEM

The Baumann MTS is a modular test system for batteries that can be used in the laboratory or in prototype construction as well as in series production. In addition to the MTS modules, Baumann also offers manual or automated contacting of the test leagues via low-voltage and/or high-voltage connectors.

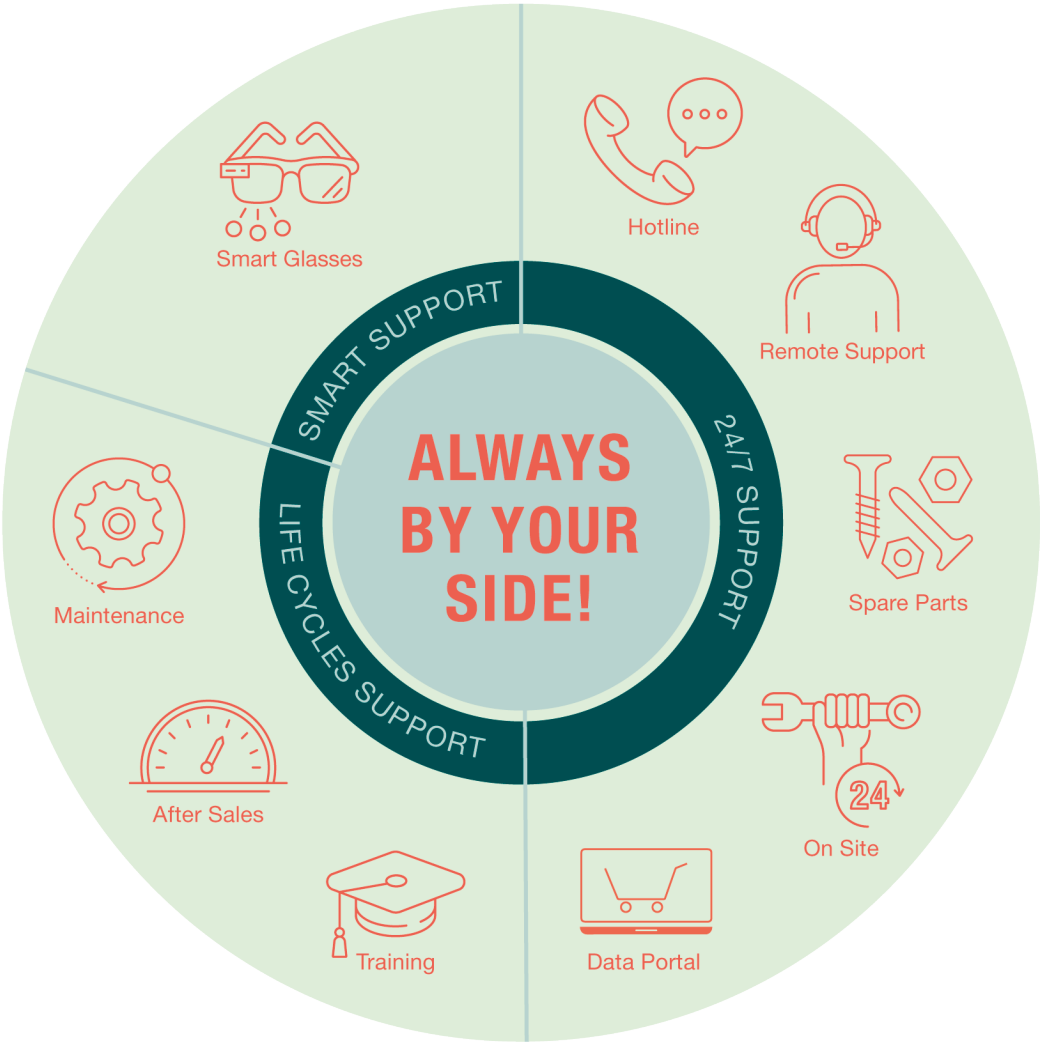


baumann  
**mts**

# ACHIEVE SUCCESS WITH TAILORED KNOWLEDGE CUSTOMISED SERVICES

At Baumann, our service is much more than just service: plant optimisations enables processes to be fine tuned. Our extensive, preventive maintenance service provides you with higher security that there will be no production downtime. The training and education

of our customers' staff also makes a significant contribution to efficiency in production. Such training focuses on individual areas and tackles practical problems while also taking into account industrial standards.





# WE ARE THERE FOR YOU WORLDWIDE AND PROVIDE EVERYTHING FROM A SINGLE SOURCE

At Baumann this also includes expert service with short response times. Particularly when changes are made to production cycles or new products need to be manufactured on the lines. Experts offer support – both at company headquarters and from service centres worldwide. Even 24/7, 365 days a year on request. This enables solutions to be found quickly and proficiently in the event of process errors.

**USA**  
Baumann  
New York

**MEXICO**  
Vectralis-Baumann  
Guadalajara

Vectralis offers first-rate systems customized to suit the needs of individual clients, as well as services and support in the area of testing and automation, to leading companies in the electronic industry. Vectralis has more than 18 years of experience in testing and automation technology and manufactures products for the electronic industry in the automotive, industrial, and consumer sectors. Vectralis works on upholding the satisfaction of our customers through innovation, teamwork, loyalty, and safety taking care of the environment.

[www.vectralis.com](http://www.vectralis.com)



**GERMANY**  
Baumann  
Amberg, Bayreuth

**HUNGARY**  
Budapest

**ROMANIA**  
Baumann  
Cluj

**CHINA**  
Baumann  
Taicang

**TAIWAN**  
Hsinchu City

**PHILIPPINES**  
Las Piñas City



## ALWAYS BY YOUR SIDE!

Our service means that you will receive quick, expert, reliable advice from us throughout the life cycle of your system. We are available at any time via our technical hotline, where we and our service team will support you with efficient, expert advice. Whether remotely, on site or with our smart services, we offer an all-round package wherever you are in the world with the aim of ensuring your satisfaction.



# PAY US A VISIT ON SOCIAL MEDIA



@Baumann GmbH



@baumannautomation



[baumann-automation.com/en](https://baumann-automation.com/en)

## CONTACT

Baumann GmbH • Oskar-von-Miller-Str. 7 • 92224 Amberg  
Tel.: +49 9621 6754-0 • [info@baumann-automation.com](mailto:info@baumann-automation.com)

