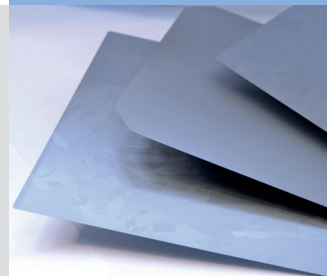
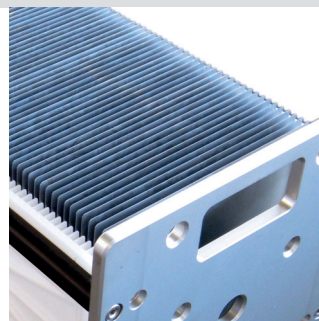


AUTOMATION

baumann



Loading and unloading of
laser systems



baumann

WAFERHANDLING LASER
GENERATION 3

baumann

WAFERHANDLING LASER GENERATION 3

Lasers are used for material processing in order to increase the efficiency of solar cells.

The wafers are fed to the laser individually and with maximum accuracy, where high throughput is required. The **baumann Wafer-handling Laser** automates this loading and unloading process.

The wafers are processed on single-lane or multi-lane conveyors. Specially developed separation and transferring techniques guarantee a stress-free wafer handling and minimum wafer breakage.

The **baumann Waferhandling Laser** is designed using many standard components, leveraging their inherent reliability, while ensuring flexibility and short delivery times.

Key Data

| | |
|-------------------------------|-----------------|
| Throughput | up to 3.600 W/h |
| Breakage rate | ≤ 0,1 % |
| Technical availability | ≥ 98 % |

Technical Data

| | |
|------------------------------|--|
| machine orientation | right-handed or left-handed orientation |
| Wafer infeed/-outfeed | <ul style="list-style-type: none"> • BAC [baumann automation carrier] • LSC • TRC • [other carrier types on request] |
| Interface | <ul style="list-style-type: none"> • Wafer conveyor • [other interfaces on request] |
| Wafer size | <ul style="list-style-type: none"> • 156 x 156 mm • 125 x 125 mm |
| Wafer thickness | 150 – 330 µm |
| Dimension | Loading: 1.850 mm / 2.450 mm / 2.040 mm [l x w x h] Unloading: 1.850 mm / 2.450 mm / 2.040 mm [l x w x h] |
| Options | <ul style="list-style-type: none"> • Remote maintenance • Virtual wafer traceability • MES connection [SECS/GEM] |

Baumann GmbH Headquarters

Oskar-von-Miller-Str. 7
92224 Amberg, Germany
Tel.: (+49) 9621 6754-0
Fax: (+49) 9621 6754-922
info@baumann-automation.com
www.baumann-automation.com

Baumann Automation (Shanghai) Co., Ltd.

Unit 8501, Building No. 8
No. 550, Ju Men Road, Huangpu District
200023 Shanghai, China
Tel.: (+86) 21 3331 5500
china@baumann-automation.com
www.baumann-automation.com

S.C. Baumann Automation S.R.L.

Str. Traian Vuia Nr. 141C
400396 Cluj-Napoca, Romania
Tel.: (+40) 264 480 320
office.romania@baumann-automation.com
www.baumann-automation.com

Vectralis-Baumann Automation

Industria Naviera 168
45069 Zapopan, Jal., Mexico
Tel.: (+52) 33 31-65-20-00
info@vectralis.com
www.vectralis.com